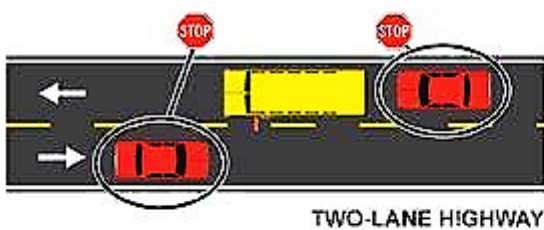


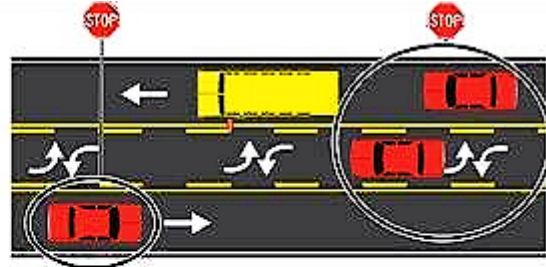
WHEN TO STOP FOR A SCHOOL BUS

When a school bus stops to load or unload school children, the driver activates the mechanical and electrical signaling devices to notify other drivers of an impending stop. All traffic behind the school bus must stop. But depending on the road's lane configuration, traffic traveling in the opposite direction may not always need to stop. The following graphics illustrate when traffic must stop for a school bus.

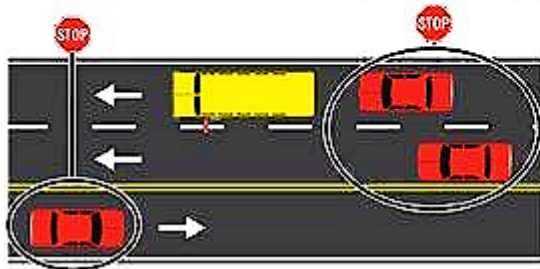
ALL TRAFFIC MUST STOP



TWO-LANE HIGHWAY



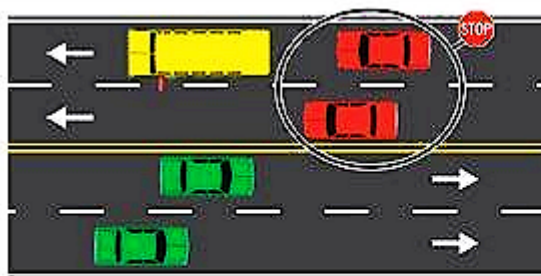
TWO-LANE HIGHWAY WITH CENTER TURN LANE



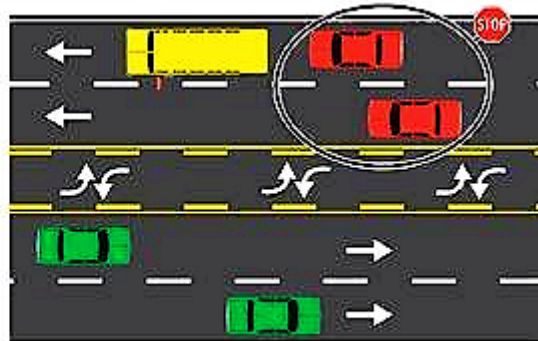
THREE-LANE HIGHWAY

If a school bus is stopped to take on or drop off passengers on a street, road or highway which has fewer than four lanes, **ALL** traffic approaching the bus from **EITHER** direction must stop and remain stopped until the bus moves or the bus driver signals motorists to proceed.

ONLY TRAFFIC PROCEEDING IN THE SAME DIRECTION MUST STOP



FOUR-LANE HIGHWAY



FOUR-LANE HIGHWAY WITH CENTER TURN LANE

If the bus is stopped on a street or road which has four or more lanes, **ONLY** the traffic proceeding in the same direction as the bus must stop.

Town and Country Police Department

